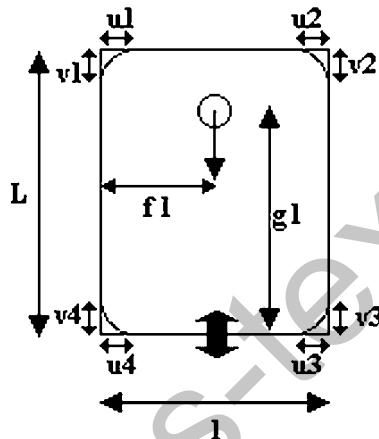


TECHNICAL SPECIFICATIONS

Bag Type : PROPRE of 0010_L **Size :** 500 * 370
Code article : 462352 or B0010L019P (Old code article) **Reference :** STK 10L LM/amkF/VT-1SR (500*370-50) CA

DIMENSIONS (IN MM) :

Bag	Dimensions	Tolerances
Length L	500	-5/+ 5
Width l	370	-5/+ 5



Spout n°1	Dimensions	Tolerances
Position from spout centre to bottom seal or to bottom perforation (G1 or R)	450,0	-8/+ 8
Position from spout centre to the left side (f1)	185,0	-8/+ 8
Inside spout diameter	28,20	
Outside diameter (for filling machine pincers)	33,00	
Height	19,00	

BAG WEIGHT:

Bag gross weight	0.068 KG
------------------	----------

BAG CONSTRUCTION - MATERIALS :

Alternative BOM : 1	Outer Film	Inner Film
Bag	PET_MET	PE
Material	PET_MET	PE
Thickness (in µm)	82	45
Colour	METAL	NATUREL
O ² permeability at 23°C and 75% HR (CC/M2/24H/Atm under 100% O ²)	1	NON_SIGNIFICATIF

	No	Yes
Irradiation	X	
Web bag	X	
If web bag, perforation type (in mm)	0,00	

Spout fitment	Spout n°1
Type	GOULOT STANDARD
Material	LDPE
Colour	NATUREL

Valve or cap fitment	Valve or cap n°1
Type	VITOP STANDARD
Material	PP ELASTOMERE HDPE PP
Colour	BLACK WHITE RED RED
Pre_plug	1ST NOTCH
Orientation	06H00

Approved by R & D on the 22.11.2013

TECHNICAL SPECIFICATIONS

Bag Type : PROPRES of 0010_L **Size :** 500 * 370
Code article : 462352 or B0010L019P (Old code article) **Reference :** STK 10L LM/amkF/VT-1SR (500*370-50) CA

PACKAGING / TRANSPORT :

	Type	Dimension (in mm)	Contents (in Bags)	Weight (in kg)
Box	BOITE_CLOCHE	770*580*297	350	26,013
Pallet	BOIS	1 200*800	4 900	375,682

REMARKS :

Food Contact : Refer to the declaration of conformity delivered.

Identification : Each bag is identified with following printing : "Smurfit Kappa Bag-in-Box" logo, "food" sign, batch number and the volume.

Storage : Empty Bags have to be stored at room temperature, in a clean, dry and dust free area, packed in their original carton and closed. Keep away bags from - poisonous articles, - heat sources, - smelling products and- direct sun. The optimal conditions of storage are comprised between 15-25°C and 40-60% of relative humidity. Unfilled empty bags can be stored during a short period at + 0°C mini and + 30°C maxi, but have to be stored in ambient conditions 24 to 48 h before use.

Using period : It is the expectation that bags will be suitable for use 24 months from the date of delivery, provided that the storage and warehousing conditions detailed above are respected. We advice to use the First In/First Out (FIFO) inventory control system. If this time period is exceeded, it is a requirement to contact Technical services of Smurfit Kappa Bag-in-Box prior to usage.

Filling : Bags are not able to keep initial properties of the product if the useful volume of the bag is not respected. Smurfit Kappa Bags are suitable for product filled at temperature between + 0°C and 40°C. Outside this temperature range, please seek technical assistance from Smurfit Kappa Bag-in-Box. The outer-packaging must be developed with the appropriate size of the bag: no head space must exist between the filled bag and its outer packaging. For bags more than 200L, the viscosity has to be above 1000 cpoises.

Transport : Product must be shipped at temperature above + 0°C.

Palletization: Stacking of pallets during transport and storage is not allowed.

Height of pallet of 12 boxes : 1m 97

Height of pallet of 14 boxes : 2m 28

Height of 2 mobitainers: 1,87 m

These information are supplied in good faith and are given as an indicative only.

Our product guarantee is, as a clear statement, limited to the refund or replacement of the goods that Smurfit Bag-in-Box would have recognized as faulty, excluding any indemnities, cost and damages.

This document cancels and replaces the previous index.

Approved by R & D on the 22.11.2013

Creation Date : 22.11.2013

Printed on the : 21.07.2016

RD EN 004A-01/10/03

Revision : 5

Page : 2 out of 2